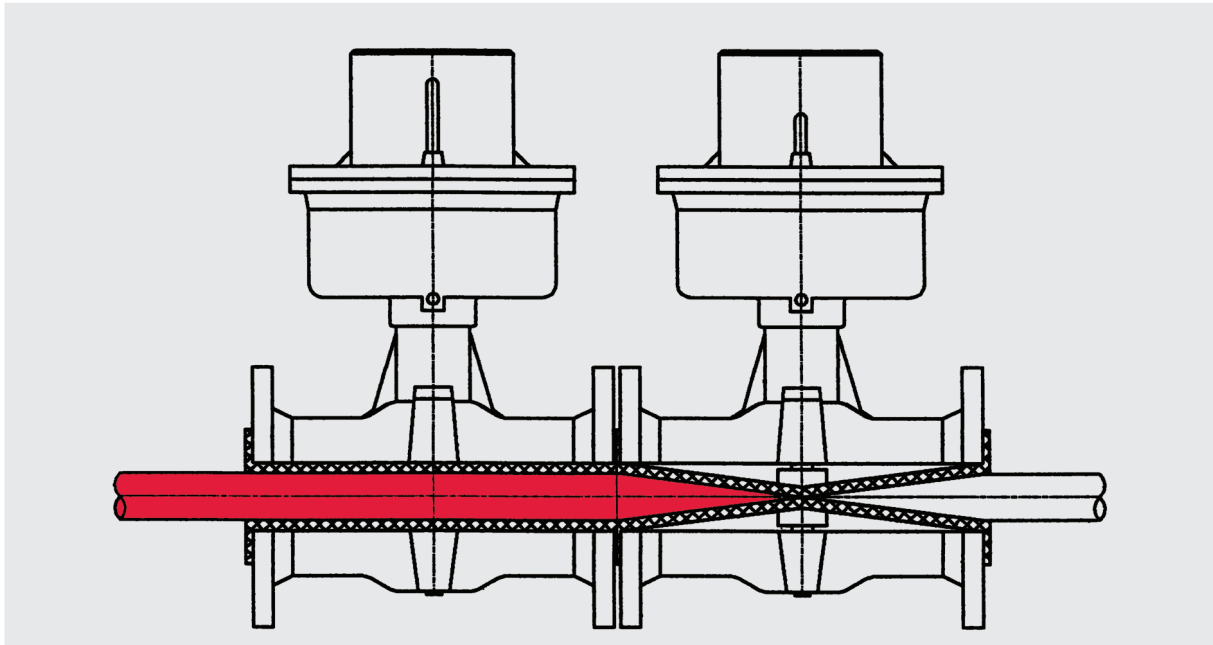


Mechanical Pinch Valves type BSV



Safety regulated . . .

Mechanical Pinch Valve



▲ The valve solution for abrasive, corrosive and fibrous products, granulates, powders and slurries.

Valve function:

The manual valve closes using a handwheel.

The pneumatic valve is normally spring closed, air to open

Advantages:

Free passage, hermetic closing, safety function in the event of loss of energy/air (PA/PA2)

Construction:

Aluminum body and actuator, sleeves in various materials (natural rubber, neoprene and EPDM)

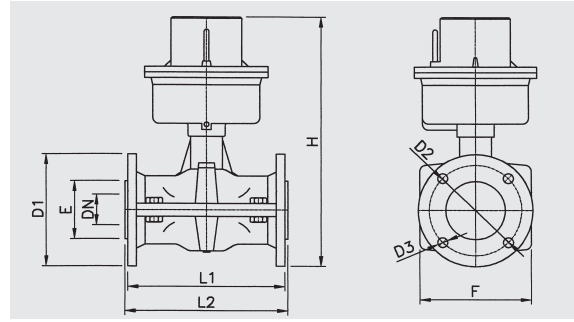
Maintenance:

A full parts list is available with all parts being easily replaced and at low cost

Industrial areas:

- Pneumatic conveying systems
- Cement and fibro cement
- Pigment and granulates
- Ceramics, glass, plastic industry
- Sewage water and mud industry
- Marble and granite industry
- Tannery

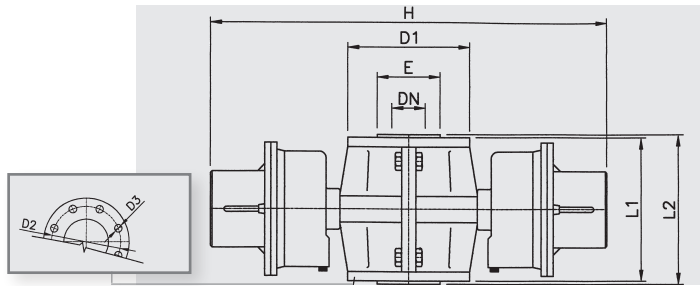
BSV-PA DN 15-65



DN (mm)	D1 (mm)	D2 (mm)	D3 (mm)	No. Holes	L1 (mm)	L2 (mm)	E (mm)	F (mm)	H (mm)	P max. (bar)	Weight (kg)	Volume (l)
15	95	65	14	4	130	135	42	80	293	5*	3,6	0,15
20	105	75	14	4	150	155	42	80	305	5*	4,2	0,15
25	115	85	14	4	160	168	58	115	323	3*	5,0	0,20
32	140	100	18	4	180	190	58	120	335	3*	5,2	0,25
40	150	110	18	4	200	208	80	140	440	3*	11,0	0,65
50	165	125	18	4	230	240	108	165	462	3*	12,0	0,80
65	185	145	18	4	290	300	120	185	492	3*	16,0	1,00

*Valves for higher pressures upon request

BSV-PA2 DN 80-200



DN (mm)	D1 (mm)	D2 (mm)	D3 (mm)	No. Holes	L1 (mm)	L2 (mm)	E (mm)	H (mm)	P max. (bar)	Weight (kg)	Volume (l)
80	200	160	18	4	250	265	140	750	3*	28,0	1,5
100	220	180	18	8	300	315	160	800	3*	30,0	1,8
125	250	210	18	8	300	320	210	880	3*	48,0	3,5
150	285	240	22	8	300	320	240	1000	3*	53,0	4,5
200	340	295	22	8	340	360	295	1100	2*	72,0	8,5

*Valves for higher pressures upon request

Pneumatic pinch valve

Normally spring closed, air to open

Materials:

Body: Aluminium

Actuator: Aluminium

Sleeve materials:

Natural rubber, neoprene and EPDM

Flange dimensions:

According to DIN PN10

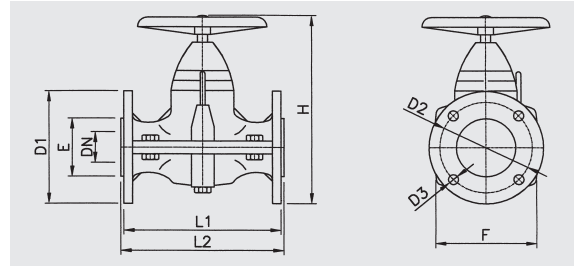
(DN 80 – 4 holes)

Accessories:

Solenoid valve, pressure regulators, limit switches

Technical changes kept in reserve.

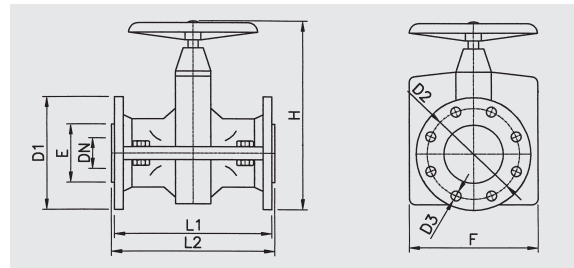
BSV-SD DN 15-50



DN (mm)	D1 (mm)	D2 (mm)	D3 (mm)	No. Holes	L1 (mm)	L2 (mm)	E (mm)	F (mm)	H (mm)	P max. (bar)	Weight (kg)
15	95	65	14	4	130	135	42	80	145	5*	1,25
20	105	75	14	4	150	155	42	80	150	5*	1,3
25	115	85	14	4	160	168	58	115	195	5*	2,0
32	140	100	18	4	180	190	58	120	210	5*	2,3
40	150	110	18	4	200	208	80	140	245	3*	3,0
50	165	125	18	4	230	240	108	165	265	3*	4,0

*Valves for higher pressures upon request

BSV-C DN 65-250



DN (mm)	D1 (mm)	D2 (mm)	D3 (mm)	No. Holes	L1 (mm)	L2 (mm)	E (mm)	F (mm)	H (mm)	P max. (bar)	Weight (kg)
65	185	145	18	4	250	265	120	210	370	3*	9,5
80	200	160	18	4	250	265	140	250	470	3*	13,0
100	220	180	18	8	300	315	160	280	470	3*	16,0
125	250	210	18	8	300	320	210	330	625	3*	21,5
150	285	240	22	8	300	320	240	370	720	3*	30,0
175	315	270	22	8	340	380	280	380	740	3*	33,0
200	340	295	22	8	340	360	295	460	900	2*	40,0
250	395	350	22	12	340	520	365	600	1070	2*	85,0

*Valves for higher pressures upon request

Pinch valve with handwheel

Materials:
Aluminium

Sleeve materials:
Natural rubber, neoprene and EPDM

Flange dimensions:
According to DIN PN10
(DN 80 – 4 holes)

Mechanism:
Single acting: DN 15 -50
Double acting: DN 65-250

Technical changes kept in reserve.

AKO UK Ltd.

13 Alvis Way, Royal Oak Trading Estate, Daventry, Northampton NN11 8PG

Tel: 0 13 27 31 27 47 • Fax: 0 13 27 31 25 65 • E-mail: sales@ako-valves.com • Web: www.ako-valves.com